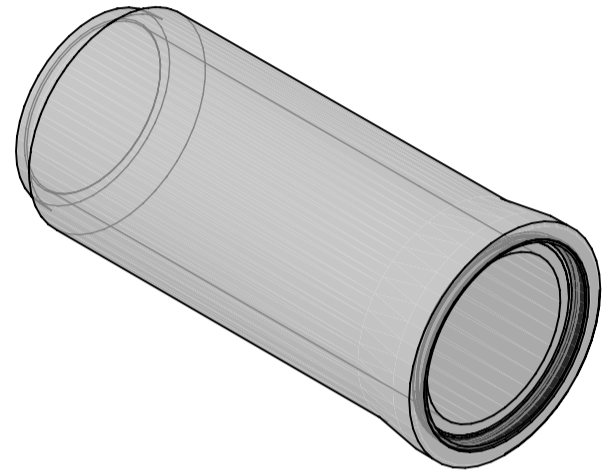
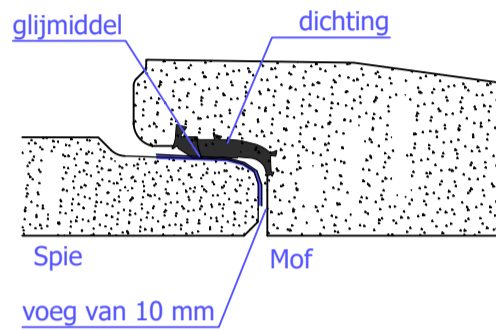
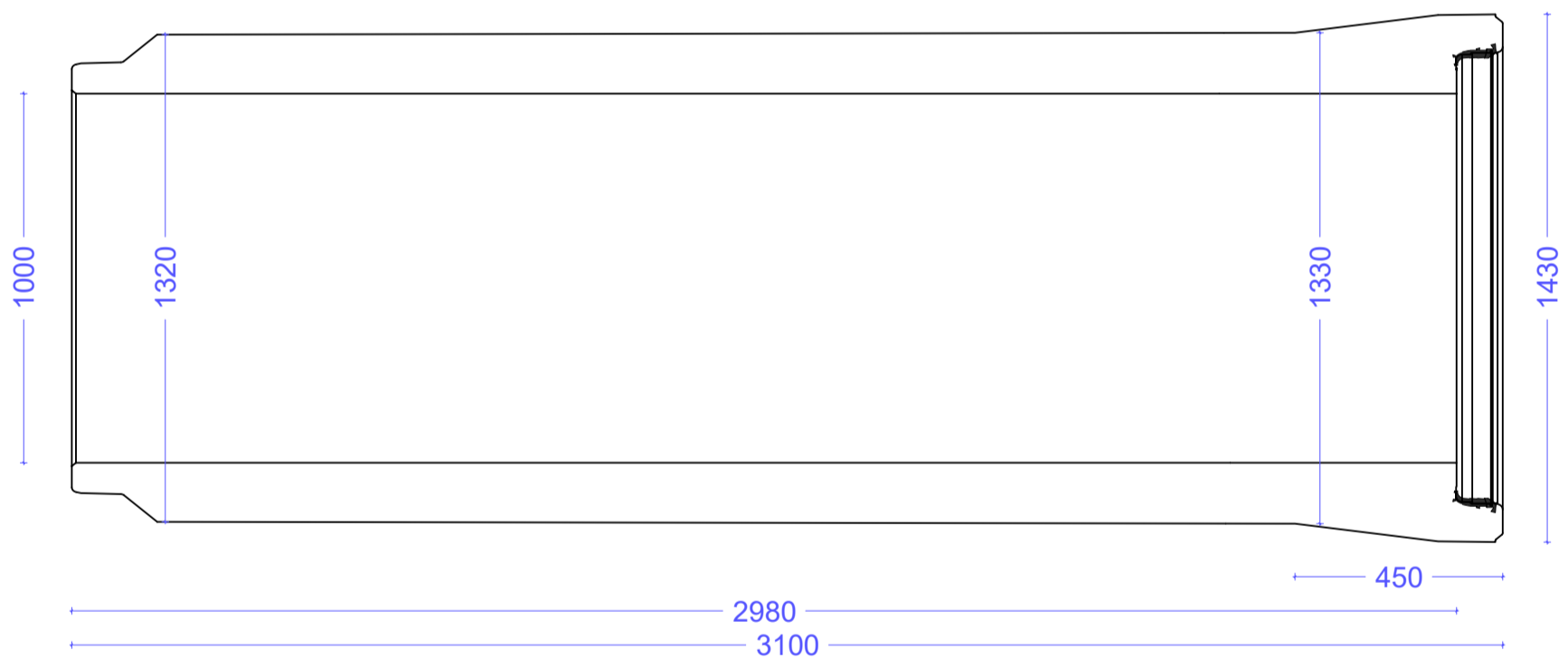


## Ongewapende buis Ø1000

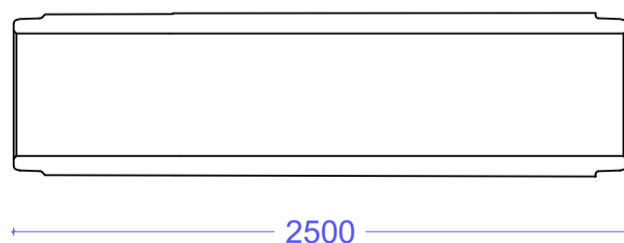


Standaard buis



Ø (mm)	Nuttige lengte (mm)	Gewicht/st (kg)	Gewicht/m (kg)	wanddikte (mm)	Sterkteklasse	Spie (mm)	Mof (mm)
1000	2980	4369	1466	160-165	R80	1168	1155

Spiebuis



### Algemene gegevens:

Alle buizen zijn BENOR-gekeurd en hebben CE-markering.  
cementsoort: CEM I 52.5 R/N SR3 LA

