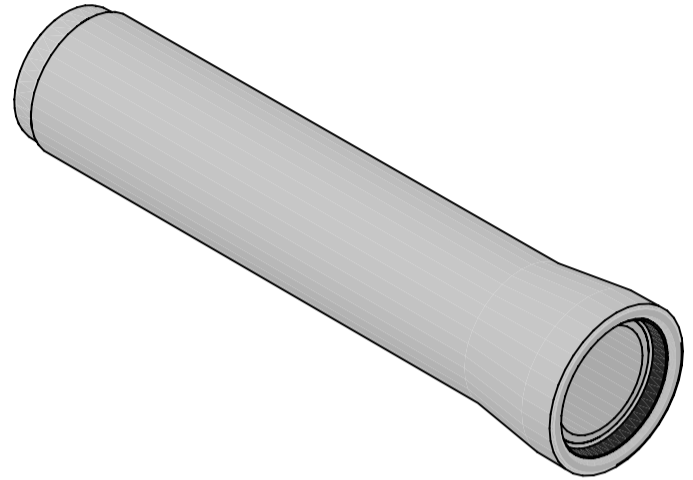
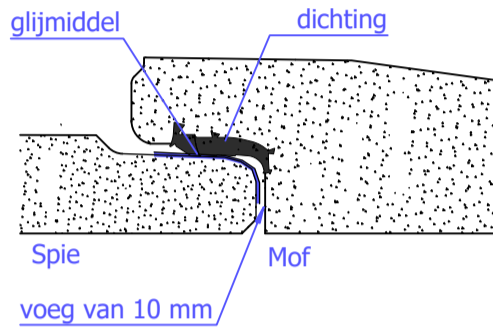
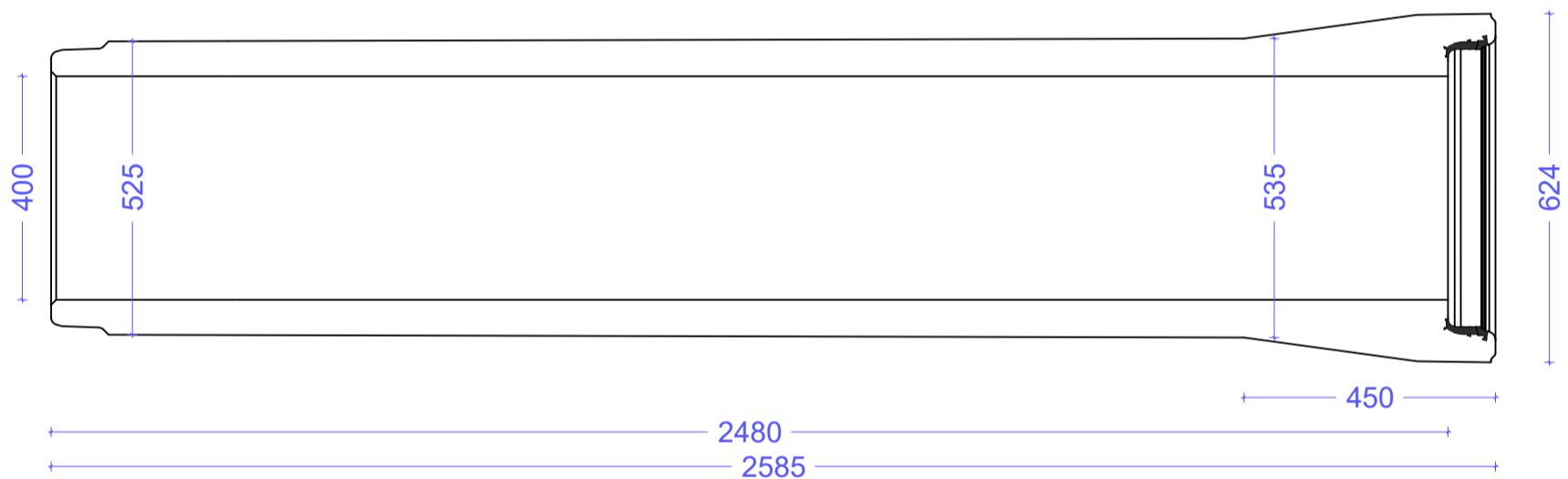


Ongewapende buis Ø400

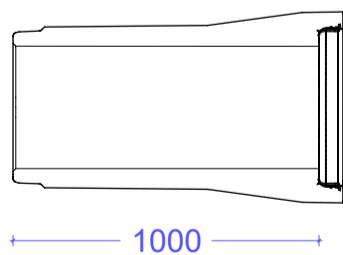


Standaard buis

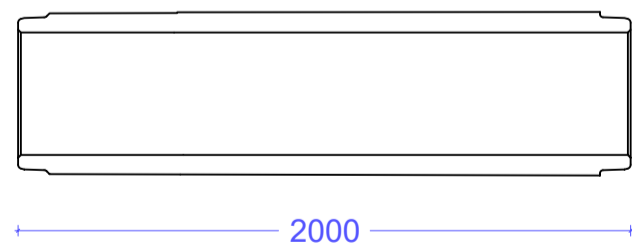


Ø (mm)	Nuttige lengte (mm)	Gewicht/st (kg)	Gewicht/m (kg)	wanddikte (mm)	Sterkteklasse	Spie (mm)	Mof (mm)
400	2480	625	252	62,5-67,5	R125	496	486

Pendelbuis



Spiebuis



Algemene gegevens:

Alle buizen zijn BENOR-gekeurd en hebben CE-markering.
cementsoort: CEM I 52.5 R/N SR3 LA

