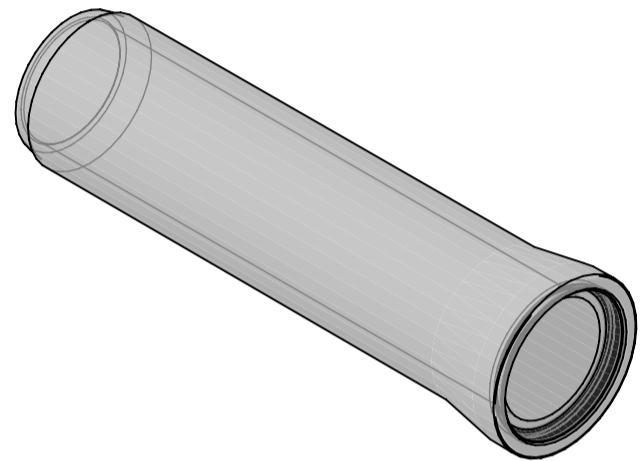
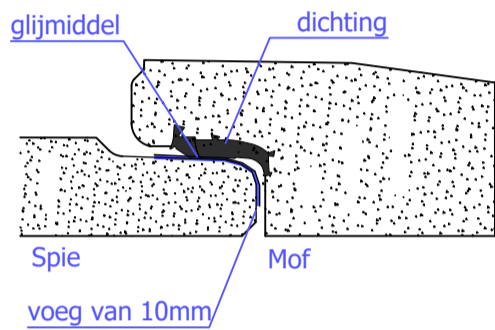
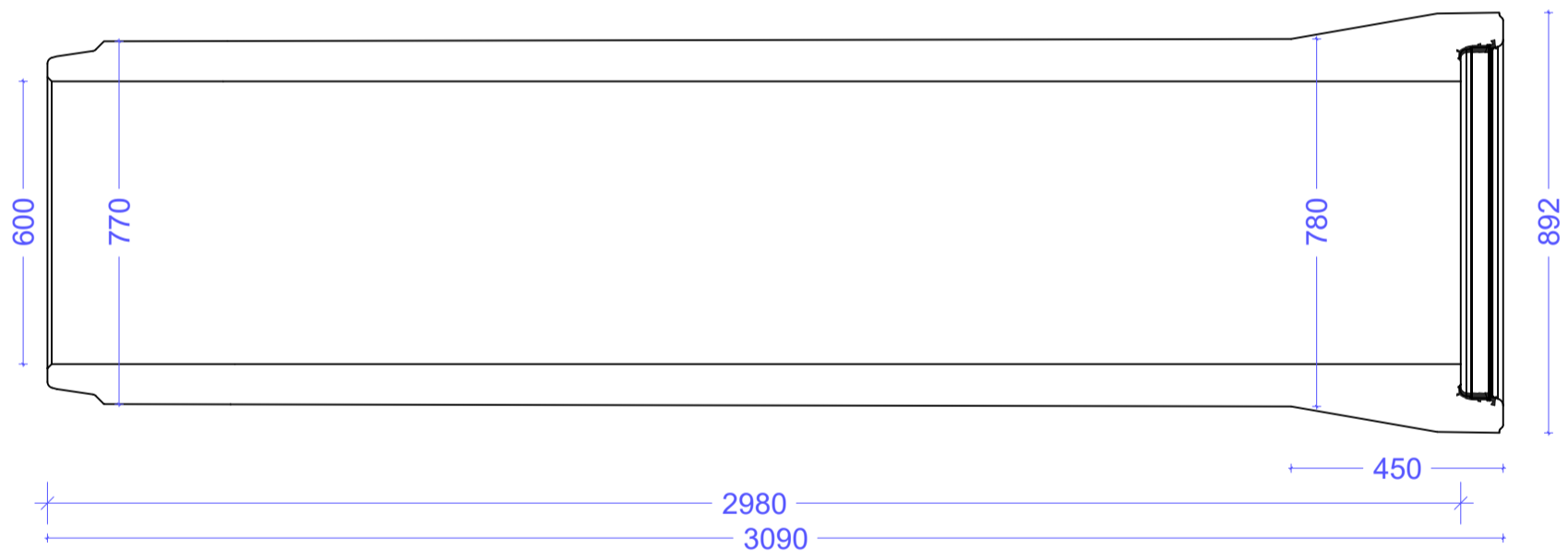


Ongewapende buis Ø600

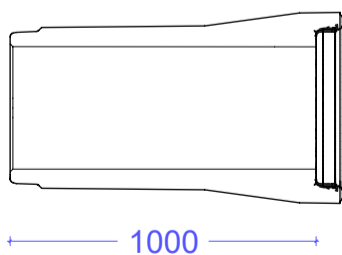


Standaard buis

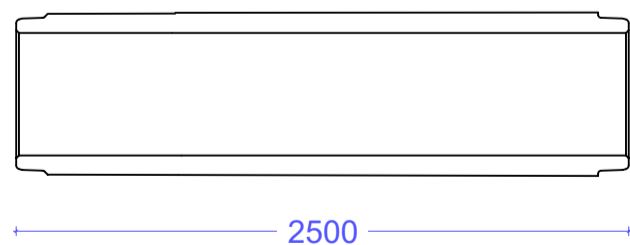


| Ø (mm) | Nuttige lengte (mm) | Gewicht/st (kg) | Gewicht/m (kg) | wanddikte (mm) | Sterkteklasse | Spie (mm) | Mof (mm) |
|--------|---------------------|-----------------|----------------|----------------|---------------|-----------|----------|
| 600 | 2980 | 1456 | 489 | 85-90 | R100 | 713 | 703 |

Pendelbuis



Spiebuis



Algemene gegevens:

Alle buizen zijn BENOR-gekeurd en hebben CE-markering.
cementsoort: CEM I 52.5 R/N SR3 LA

106 **BENOR** 489

CE NBN B21-106
NBN EN 1916