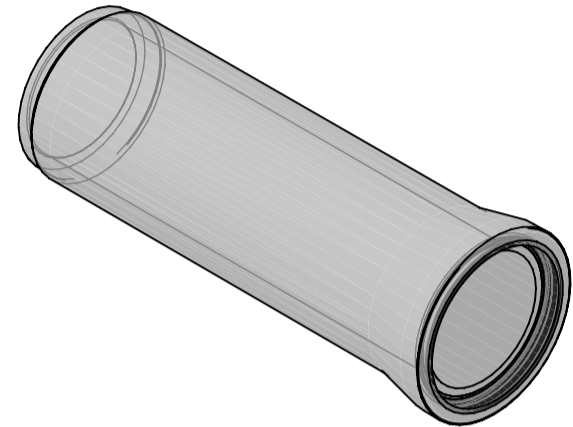
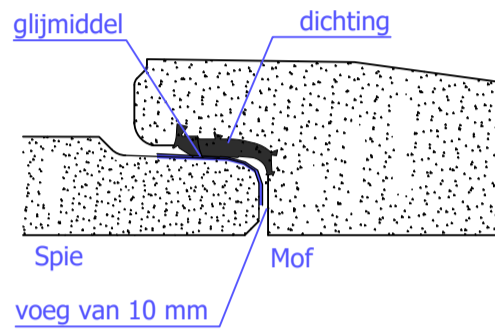
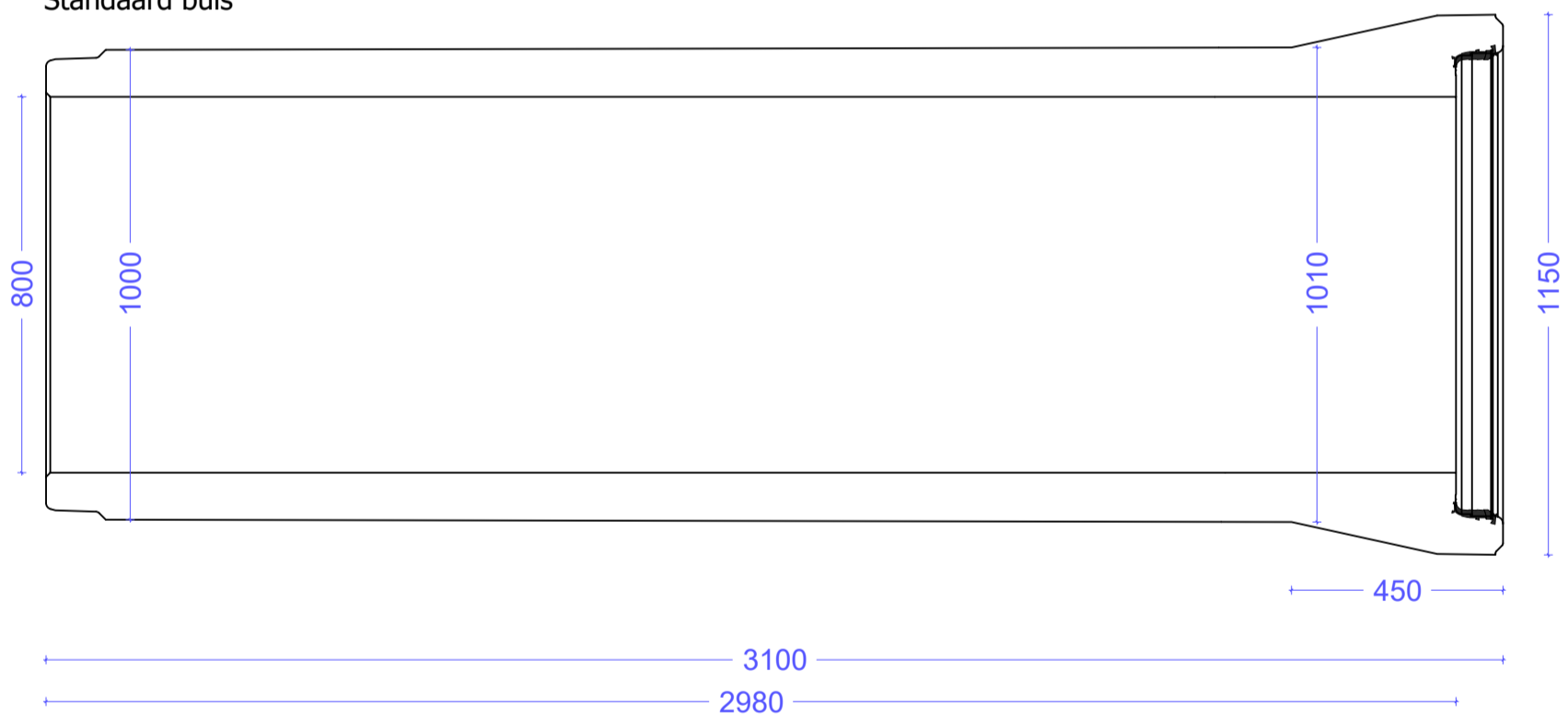


Ongewapende buis Ø800

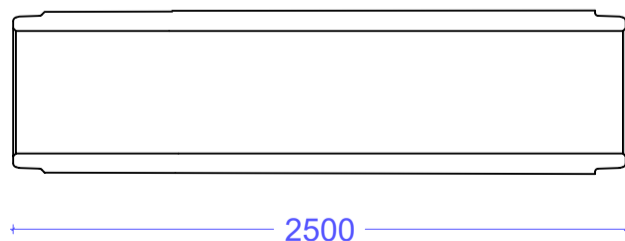


Standaard buis



Ø (mm)	Nuttige lengte (mm)	Gewicht/st (kg)	Gewicht/m (kg)	wanddikte (mm)	Sterkteklasse	Spie (mm)	Mof (mm)
800	2980	2250	755	100-105	R90	962	949

Spiebuis



Algemene gegevens:

Alle buizen zijn BENOR-gekeurd en hebben CE-markering.
cementsoort: CEM I 52.5 R/N SR3 LA

